

中音嗩吶

唐響

伍卓賢曲
 (2017修訂合奏版)

夢 ♩ = 62 ca. 稍自由

5

25 ♩ = 56

31

37

43

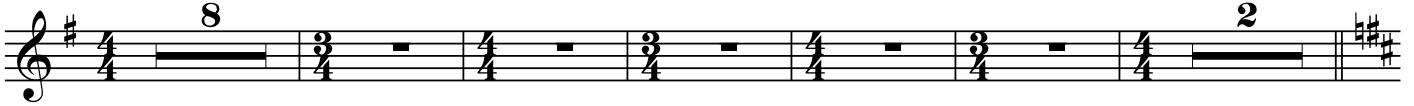
49

62

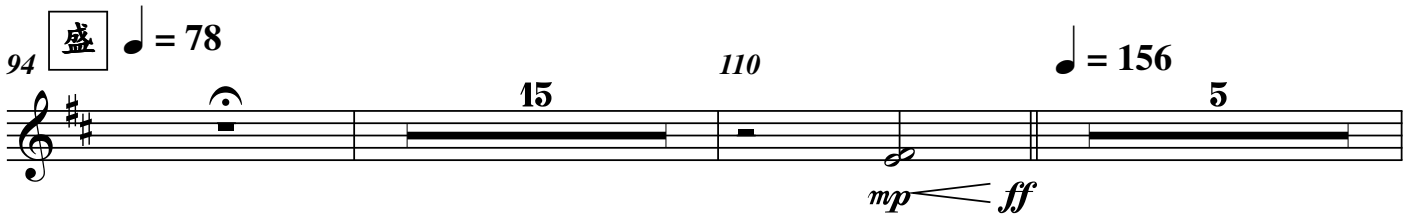
73



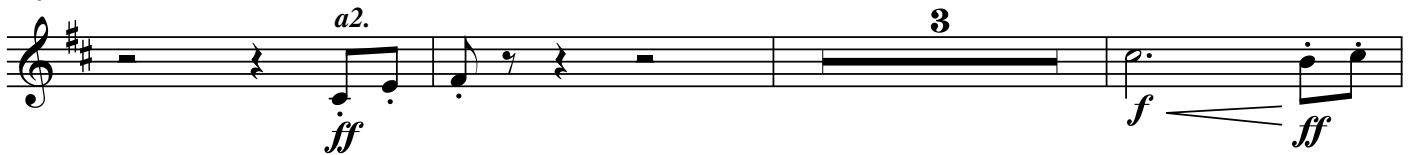
79



94



116



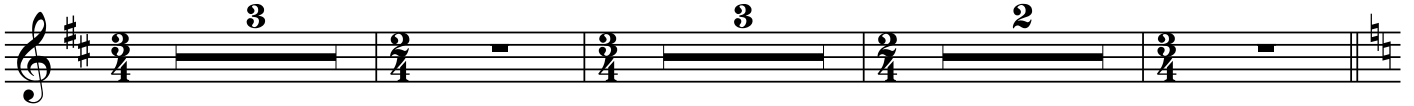
122



170



178



188



200



214

221

224 265

266

270

274

278

282

287

舞 ♩ = 62 ca.

344 *a2.*
f




347



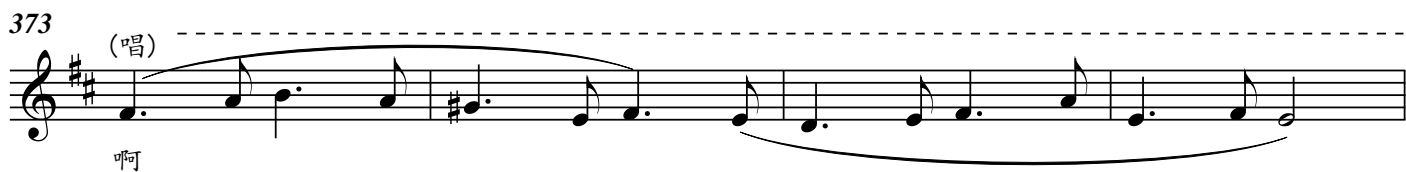
350 稍加快 同 ♩ = 56
ff 16



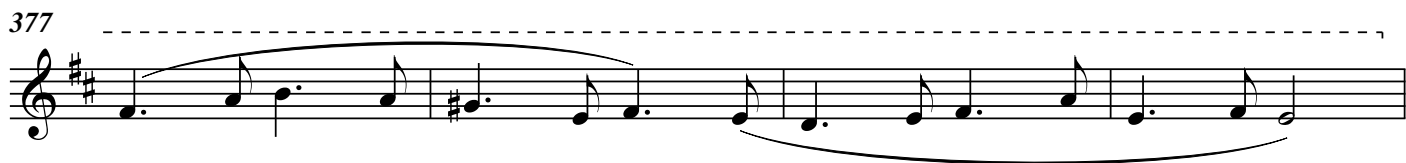
369
f



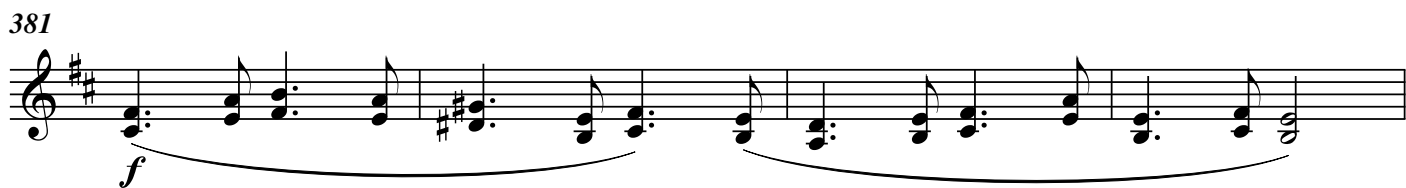
373 (唱)
啊



377



381
f



385



389 稍慢
ff *fff*

