

高音嗩吶

賽馬會中樂360 十面埋伏 (中級)

劉文金、趙咏山 編曲
譚逸昇 改編

【列營】威武地

(大鼓)

Musical notation for the first staff, featuring a drum part with a treble clef and a 2/4 time signature. It includes a fermata over a whole note and a dynamic marking of *ff*.

4

Musical notation for the second staff, starting at measure 4. It features a treble clef and a 2/4 time signature, with a dynamic marking of *mp*.

8

Musical notation for the third staff, starting at measure 8. It includes a fermata, a *rit.* marking, a dynamic marking of *f*, and a tempo marking of 慢.

14 由慢漸快 行板

Musical notation for the fourth staff, starting at measure 14. It includes a tempo marking of 行板 and a dynamic marking of *f*.

20

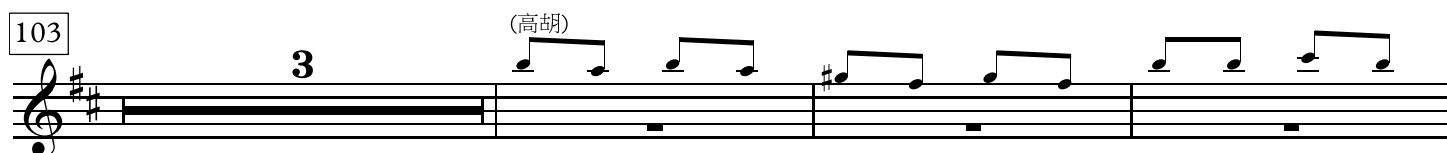
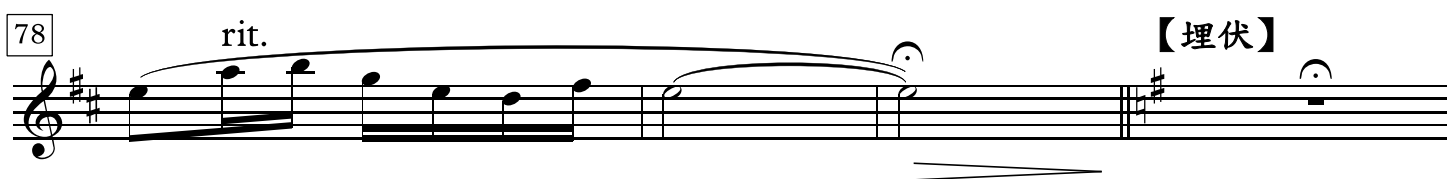
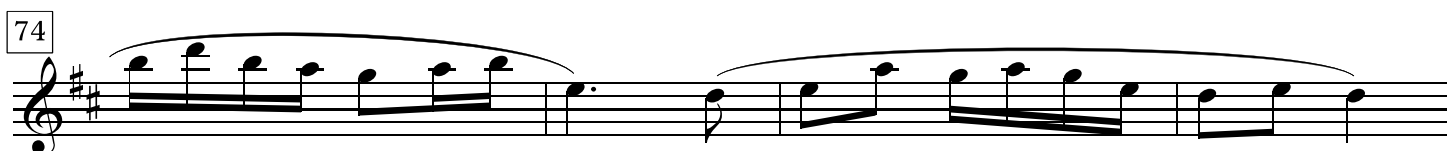
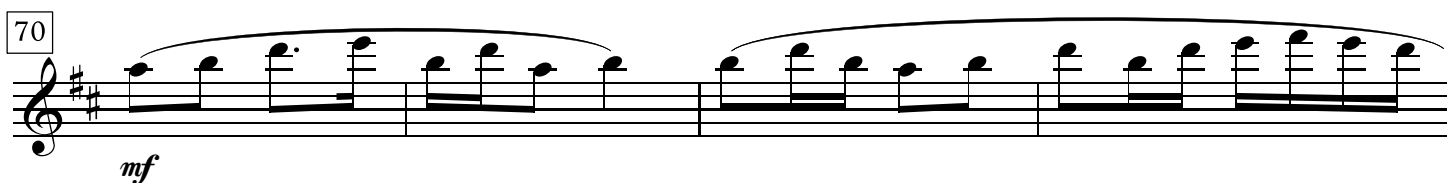
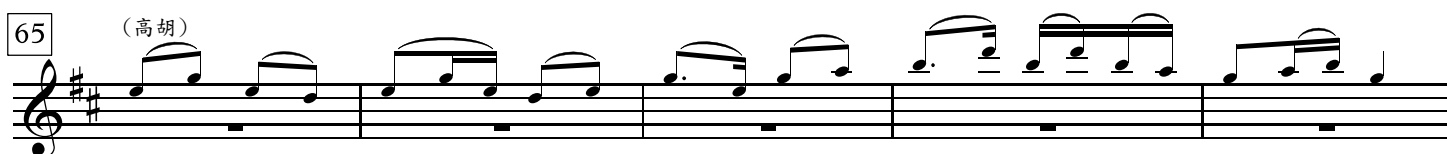
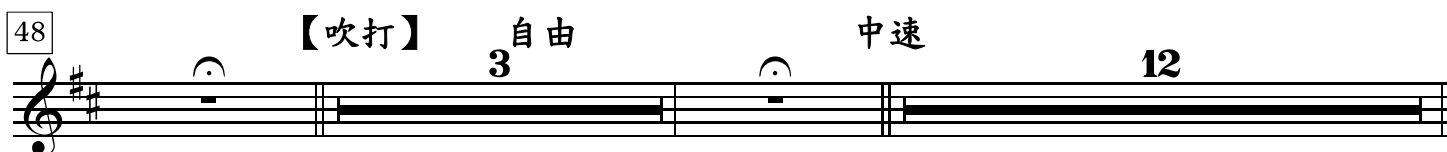
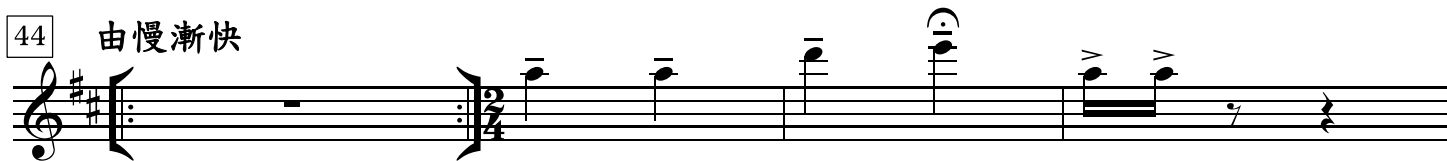
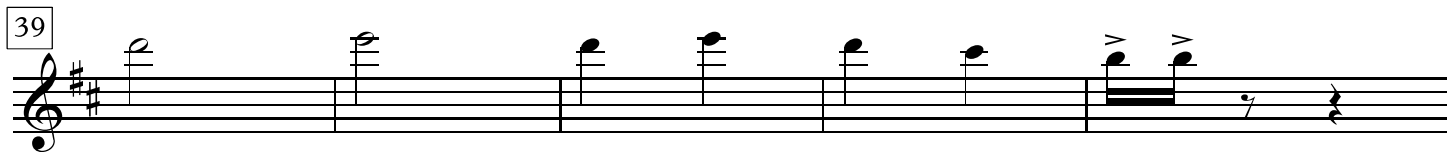
Musical notation for the fifth staff, starting at measure 20. It includes a tempo marking of 稍穩 and a dynamic marking of *f*.

24

Musical notation for the sixth staff, starting at measure 24. It includes a dynamic marking of *f*.

28 由慢漸快 行板

Musical notation for the seventh staff, starting at measure 28. It includes a tempo marking of 行板 and a dynamic marking of *f*.



109

mf

113

ff

124 稍慢 突轉快板

ff

144 (琵琶) rit.

ff

150 由慢漸快 自由

ff

156 rit. 快板

ff

161 rit.

fff

167 快速

fff

173 更慢些

fff

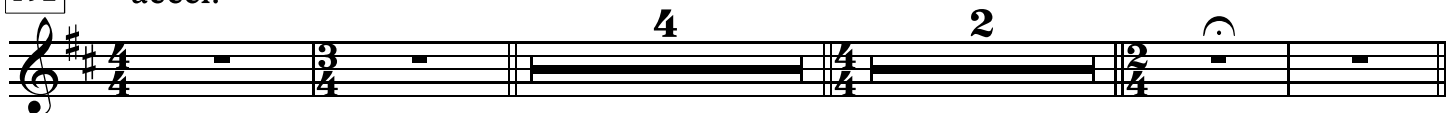
【烏江】
中速稍慢

183



192

accel.



【奏凱】

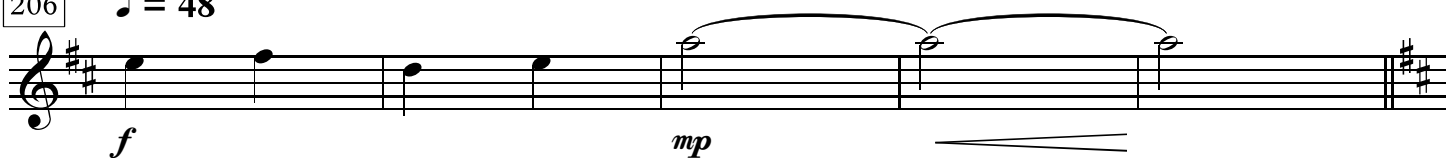
202 中速

(二胡)



206

♩ = 48



211

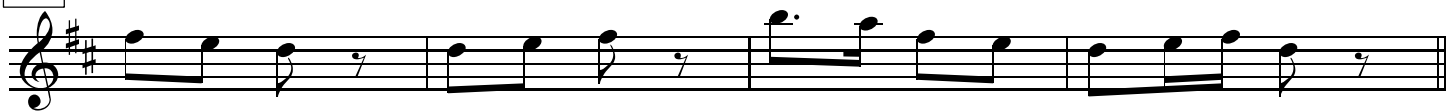
稍快 ♩ = 132



214



218



222

8

(二胡)



234 *molto rit.* 慢 *f*

239

244

249 *mp*