

中阮

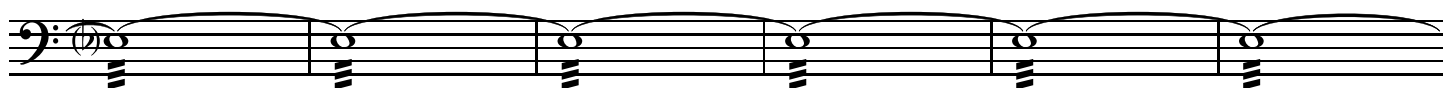
賽馬會中樂360 唐響 (中級)

伍卓賢 曲、編

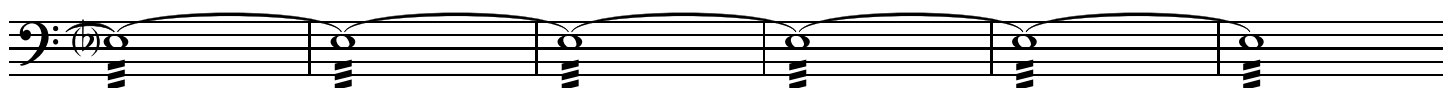
夢 ♩ = 62 ca. 稍自由



6



12



18



25

mp

29

33

37

41

mf

45

49

f

52

mf

54

f

56

mp *p*

59

62

65

68

71

78

81

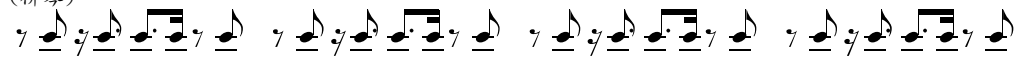
84

87

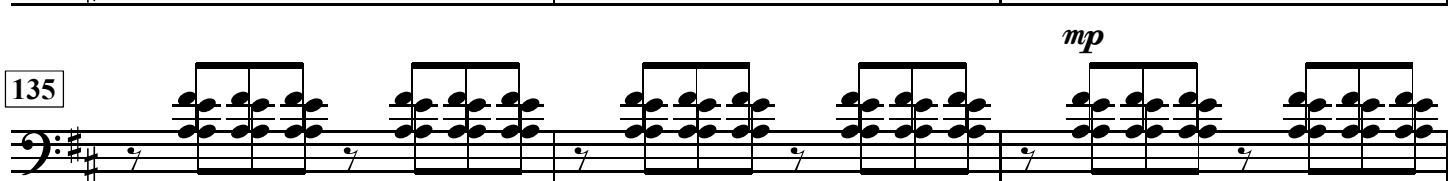
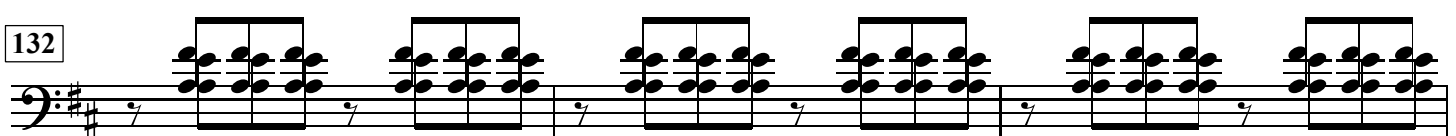
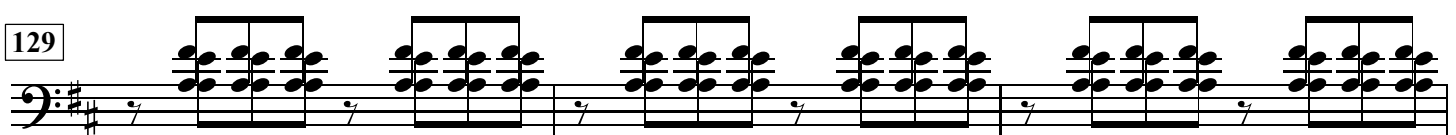
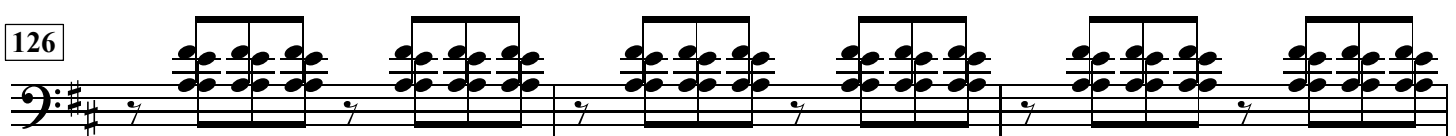
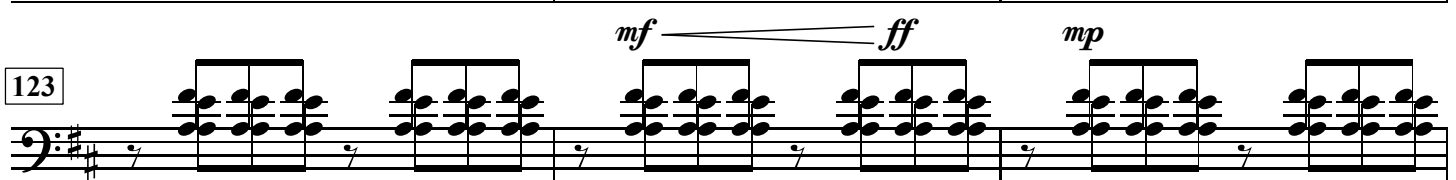
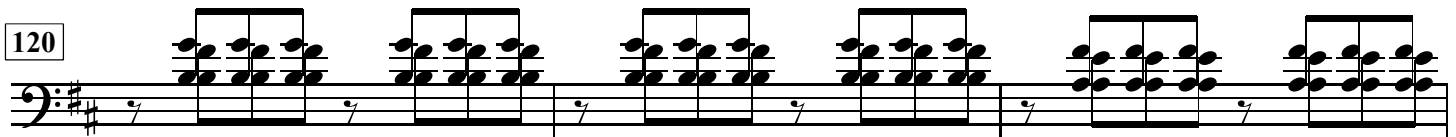
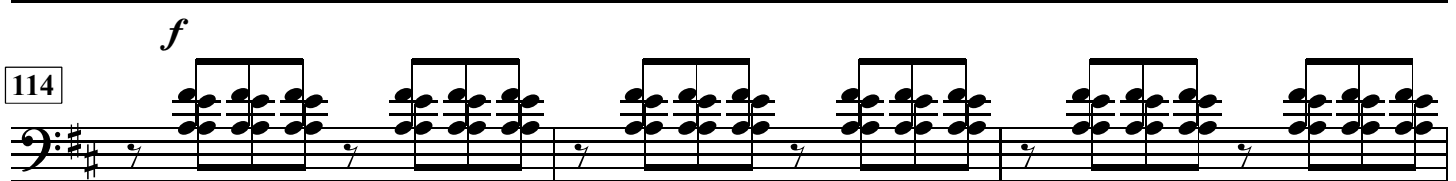
90

94 盛 $\text{♩} = 78 \text{ ca.}$
4

(柳琴)



103



138

141

144

147

150

153

156

159

162

165

168

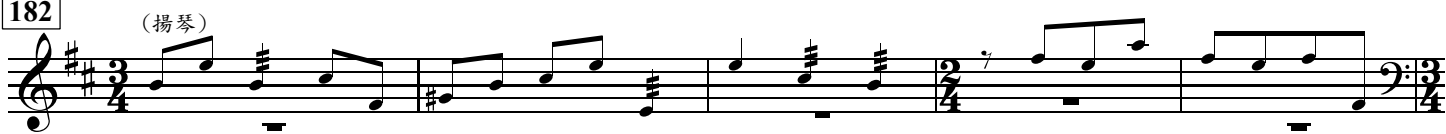
unis.

f *mf*

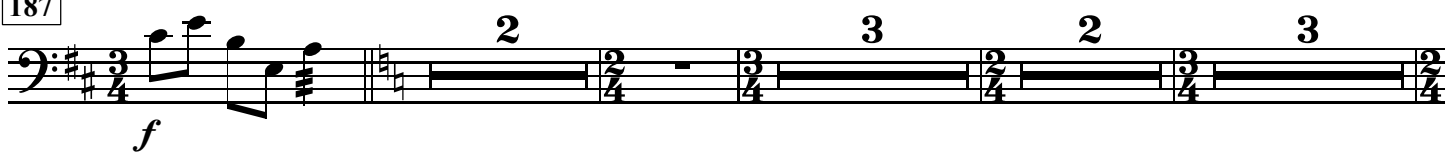
172



182



187



199



206

f

211

p ————— *f*

216

220

————— *ff*

224

p

228

232

236

240

244

249

254

257

260

263

266

270

274

278

282

286

舞

♩ = 62 ca.

(琵琶)

291

295

302

307

311

315

319

323

327



330



333



336



340



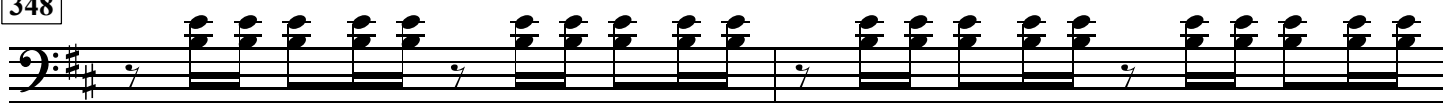
344



346

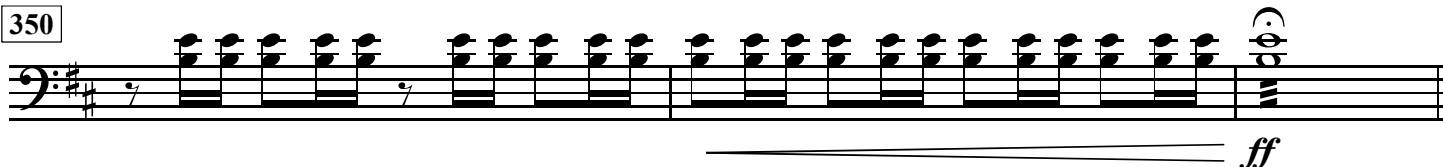


348



稍加快

350



353 同 ♩ = 56 ca.

357 稍加快

361 ♩ = 66 ca.

363

365 ♩ = 69 ca.

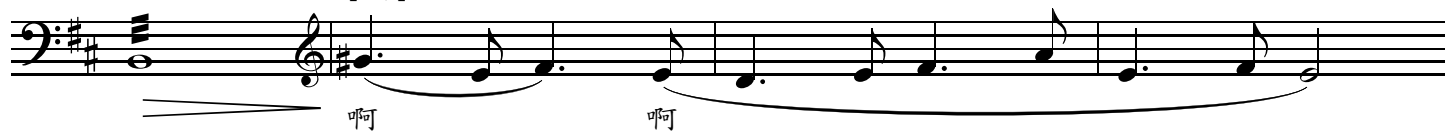
367

369

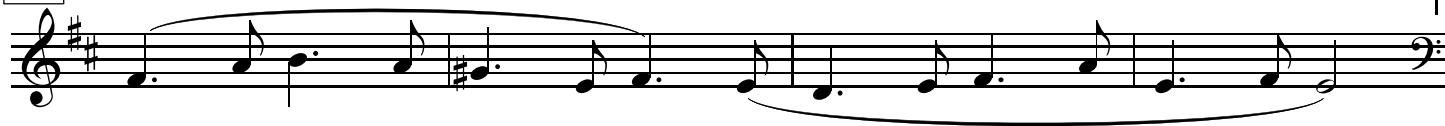
371

373

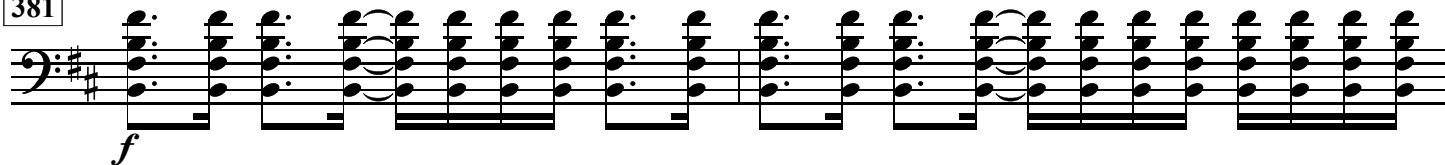
[唱]



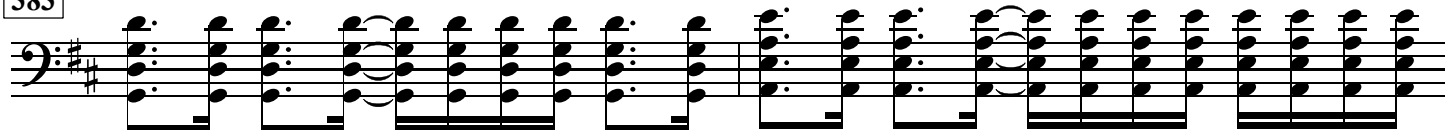
377



381



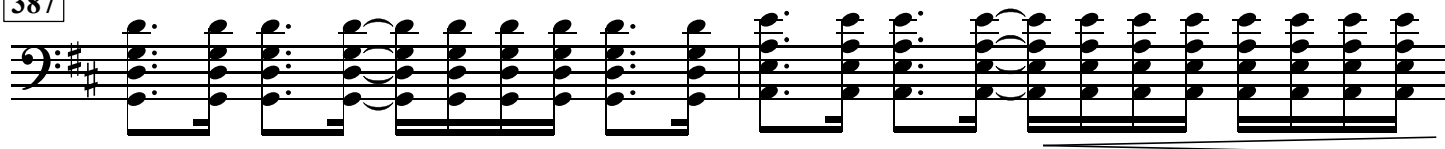
383



385



387



稍慢

389

